

# **The International Friendship All Japan Junior Yacht Club Regatta 2025 Sailing Instructions (SI)**

The notation '[DP]' in the SI means that the penalty for a breach of that rule may be less than disqualification at the discretion of the protest committee.

The notation '[NP]' in the SI means that a violation of this rule is not grounds for protest by a boat. This changes Rule 60.1(a).

The notation '[SP]' in the SI means a rule that allows the race committee to apply standard penalties without a hearing. The race committee may also protest, in which case the penalty will be decided at the protest committee's discretion after a hearing.

## **1. Rules**

- 1.1 The regatta will be governed by the rules as defined in the Racing Rules of Sailing 2025-2028 (hereafter as RRS).
- 1.2 If there is a conflict between languages, the English text will take precedence.

## **2. Changes to Sailing Instructions**

Any changes to Sailing Instructions (hereafter as SI) will be made via "LINE" 60 minutes before the time of the warning signal on the day when it will take place.

However, any changes to the schedule of the races will be made via "LINE" before 18:00 on the previous day when it will take place.

## **3. Communication with competitors**

- 3.1 Notices and communications to competitors will be made via "Regatta LINE Open Chat" (hereafter as "LINE"). The check-out/check-in should be made at the race office.

Regatta Open Chat URL

[https://line.me/ti/g2/H0oVudklp4KW3yaNMYFjHqaoTo-wkDMAOFzLWQ?utm\\_source=invitation&utm\\_medium=link\\_copy&utm\\_campaign=](https://line.me/ti/g2/H0oVudklp4KW3yaNMYFjHqaoTo-wkDMAOFzLWQ?utm_source=invitation&utm_medium=link_copy&utm_campaign=)



- 3.2 Participants of the regatta are requested to participate in LINE by the day before the regatta.
- 3.3 LINE will be used for the transmission from the race committee and the contact for departure/arrival of boats.
- 3.4 Profile Name for LINE will be Sail Number/Full Name for competitor and Club Name/Full Name for supporter.  
(Example: Competitor as JPN 1/Taro Kanto, Supporter as Wakasu Junior/Jiro Kanagawa)
- 3.5 Any questions will not be accepted. (Posted text will be deleted.)

- 3.6 [DP] Except in an emergency or using equipment provided by race committee, a boat must not make radio transmissions while racing, nor receive radio communications not available to all boats. This restriction also applies to mobile telephones.

#### 4. Code of Conduct

[DP] Competitors and Supporters must comply with reasonable requests from the race committee.

#### 5. Signals made ashore

- 5.1 Signals made ashore will be displayed at the flagpole located at the race office.
- 5.2 [DP] [NP] D flag with one sound means 'The warning signal will be made not less than 30 minutes after D flag is displayed in Racing Area A and not less than 30 minutes in Racing Area B. Boats shall not be moved from the designated location on shore until this signal is made.
- 5.3 AP flag will not be displayed for each race of each class as stated in SI 6.2. When D flag is not displayed no later than 30 minutes of the time of the warning signal, the start of the race is postponed indefinitely. In Racing Area A, when D flag is displayed above the class flag, that signal is applied only for that class.

#### 6. Schedule of the regatta and races

##### 6.1 Schedule of the regatta

July 25th (Fri.)	07:30	Harbor Gate opens.
	08:00~12:00	Registration and Distribution of Sailing Instructions
	09:00~15:00	Sailing Exercise (Details will be announced at the time of Registration.)
	16:00~16:30	Opening Ceremony (3rd floor Hayama Port Administration building)
	16:40~17:00	Safety Seminar (Same as above)
	17:00~17:30	Briefing of Competition Management (Same as above)
	17:30~19:30	International Friendship Party (Same as above)
July 26th (Sat.)	08:30 ~	Skippers Meeting (In front of Hayama Port Administration building)
July 27th (Sun.)	16:00 ~	Closing Ceremony and Award Ceremony (3rd floor Hayama Port Administration building)

##### 6.2 Schedule of races

The warning signal of each class is as follows.

July 26th (Saturday)

Racing Area A			Racing Area B	
Time	Class		Time	Class
10:30	International 420 Class	The 1st Race	10:30	Optimist Dinghy Beginners' Class
10:37	ILCA 4	The 1st Race		The 1st Race
10:44	Optimist Dinghy Advanced Class	The 1st Race		
Races will be made continuously.			Races will be made continuously.	

July 27th (Sunday)

Racing Area A		Racing Area B	
Time	Class	Time	Class
10:30	International 420 Class The 1st Race of the day	10:30	Optimist Dinghy Beginners' Class
10:37	ILCA 4 The 1st Race of the day		The 1st Race of the day
10:44	Optimist Dinghy Advanced Class The 1st Race of the day		
Races will be made continuously.		Races will be made continuously.	

- 6.3 This regatta is scheduled to have seven (7) races over two days, but the regatta will be constituted with the completion of one race.
- 6.4 On July 26th (Saturday), maximum five(5) races are planned for all classes.  
However, in case planned all races are not completed because of the weather conditions or other reasons, the next race will be made on the following day.
- 6.5 When the following race is intended to be held, the race committee signal boat will display orange flag of the starting line with one sound to alert the boats at least 5 minutes before the warning signal is displayed.
- 6.6 No warning signal will be made after 13:00 on the last day of the regatta.

## 7. Warning signal flags and Class flags

7.1 Warning signal flag in Raing Area A will be yellow flg.

7.2 Class flags is as follows.

Class	Class flag
International 420 Class	420 Class flag
ILCA4	ILCA flag(Yellow)
Optimist Dinghy Advanced Class	Optimist Dinghy Class flag (Blue)
Optimist Dinghy Beginners' Class	Optimist Dinghy Class flag (Red)

7.3 Class flags in Racing Area A will be displayed before warning signal. This changes RRS26.

## 8. Racing area

Diagram-1 shows Racing Area A (International 420 Class, ILCA4, Optimist Dinghy Advanced Class) and B (Optimist Dinghy Beginners' Class).

## 9. The course

- 9.1 Diagram-2 shows the course to be sailed which includes approximate angles between the legs, the sequence of the rounding marks and the side of rounding each mark.
- 9.2 In Racing Area A, no later than the warning signal, the race committee signal boat will display the approximate compass bearing of the first leg.

## 10. Marks

10.1 Mark or associated gate mark are as follows.

	Racing area A (Optimist Dinghy Advanced Class, ILCA, International 420 Class)	Racing area B (Optimist Dinghy Beginners' Class)
Mark 1	Pink frustum of cone	Yellow slender cylindrical
Mark 2,3s,3p,4	Pink frustum of cone	none
New Mark	Orange cylindrical	none
Starting Marks	Race committee boat	Race committee boat
	Yellow slender cylindrical	Pole with orange flag hoisting
Finishing Marks	Race committee boat with blue flag hoisting	Race committee boat with blue flag hoisting
	Yellow slender cylindrical	Orange cone(small)

## 11. The start

- 11.1 The starting line will be between the pole on the race committee boat displaying an orange flag or banner and the starting mark on the other side and on the course side.
- 11.2 [DP] [NP] Boats whose warning signal has not been made shall keep clear of starting area during the starting sequence of other races.  
The avoiding area will be about 100 meters away from the starting line.
- 11.3 A boat starting later than 4 minutes after the starting signal will be scored as DNS (Did Not Start). without hearing. This changes RRS Appendix A4.
- 11.4 Official boats may coach competitors in Racing Area B during their starting.

## 12. Changing the next leg of the course

- 12.1 To change the next leg of the course in Racing Area A, the race committee will (a) lay a new mark, (b) move the finishing mark or (c) move the gate mark on the leeward side.  
And if possible, the race committee will remove the original mark at once. When in a subsequent change a new mark is replaced, it will be replaced by an original mark.
- 12.2 In Racing Area B, no change of the leg of the course will be made after the preparatory signal.  
This changes RRS33.

### 13. The finish

The finishing line will be between pole with blue flag of the race committee boat and the finishing mark at the other side and end on the course side.

### 14. Penalty system

14.1 RRS Appendix P will apply for the breach of RRS 42.

14.2 RRS Appendix P2.3 will not apply and RRS Appendix P2.2 is changed so that it will apply to any penalty after the second one.

### 15. Time limits and the target times

15.1 Time limits of the first finishing boat and the target times are as follows.

Class	Mark 1 time limit	Finishing window	Target time
International 420 Class	20 minutes	15 minutes	40 minutes
ILCA4	20 minutes	15 minutes	40 minutes
Optimist Dinghy Advanced Class	20 minutes	15 minutes	40 minutes
Optimist Dinghy Beginners' Class	10 minutes	10 minutes	20 minutes

15.2 If no boat has passed Mark 1 within Mark 1 time limit, the race will be abandoned.

Failure to meet the target time will not be the ground for redress.

This changes RRS 61.

15.3 Finishing window is the time for boats to finish after the first boat of each class has sailed the course.

A boat that starts but fails to sail the course within the Finishing window and does not subsequently retire, be penalized, or be given redress will be scored as "Did Not Finish" (DNF) without a hearing. This changes RRS 35, Appendix A5.1, A5.2 and A10.

### 16. Shortening or abandonment after the start

The race committee may shorten the course or abandon the race based on RR 32 and in addition to the above reason, if they consider that the race will not complete within the above SI 15.1, the race time limits.

This changes RRS 32.1.

### 17. Requests for hearing

17.1 Protest forms are available at the race office. Protests and requests for redress or reopening shall be delivered to the protest committee within the appropriate time limit.

17.2 The protest time limit will be 60 minutes after the time when the last boat has finished the last race of the day or the time when the race committee has signaled that there would have no more race on that day, whichever is later.

However, the protest committee chairman may extend the protest time limit. It will be notified via "LINE".

17.3 Notices of protest by the race committee or the protest committee will be made via "LINE" to inform competitors of hearings in which they are parties or named as witnesses within 15 minutes after the protest time limit to let them know about hearings.

Hearings will be held in the protest room located on the 2nd floor of the club house as from the time noticed.

- 17.4 Notices of protests by the race committee or the protest committee will be made via "LINE" to inform boats under TTS 60.2(d).
- 17.5 A list of boats that have been penalized under SI 14.1 for breaching RRS 42 will be made via "LINE" before the protest time limit.
- 17.6 A request for reopening a hearing on the last day of the race may be delivered within the following time limit.
  - (a) When the competitor received the decision the day before, it shall be within the protest time limit.
  - (b) When the competitor received the decision on the day, it shall be within 15 minutes after the decision received.This changes RRS 63.7.
- 17.7 A request for redress based on the decision made by the protest committee shall be delivered within 15 minutes after the display of the decision on the official notice board on the last day of the race. This changes RRS 61.2
- 17.8 Penalties for violations of class rules or violations of NoR or SI marked [ DP] are at the discretion of the protest committee. Guidelines for these violations and the associated penalties will be made via "LINE".
- 17.9 Guidelines for penalties associated with violations of rules marked [SP] will be made via "LINE" and the scoring abbreviation will be STP. The race committee may protest a boat if it considers the penalty inappropriate. This changes RRS Appendix A5,A10.
- 17.10 A request for redress for an incident identified in a scoring inquiry is considered to have met the time limit in the following case.
  - 17.10.1 The scoring inquiry is submitted within the time limit set out in RRS 61.2(b) and
  - 17.10.2 The request of redress is submitted as soon as reasonably possible after the reply to the scoring inquiry is given. The reply will be made via "LINE". This changes RRS 61.2.

## 18. Scoring

- 18.1 At least 1 race is required to be completed to constitute this regatta.

Even if no race is completed due to weather condition and other reasons, any extended race will not be held.
- 18.2 A boat's score for all classes will be as follows.
  - (a) When less than 6 races are completed, a boat's series score will be the total of her all race scores.
  - (b) When more than 6 races are completed, a boat's series score will be the total her race scores excluding her worst score.
- 18.3 If a boat believes that there is an error in the posted scores or series results, it may request a correction of the scores or results by submitting a written request to the race committee at the race office.
- 18.4 The number of the boat participated in each class will be determined in accordance with the list registered at the registration desk of the race office by the time of 12:00 on July 25th (Friday).
- 18.5 Scoring for Team Race competition will be made in accordance with Notice of Race.

## 19. [NP] Safety regulations

- 19.1 Competitor, coach or supporter shall make the check-out/check-in at the race office.
- 19.2 [SP] A check-out shall be done from 9:00 on the day by 10 minutes after the display of D flag of each class.
- 19.3 [SP] A check-in shall be done no later than 60 minutes after the final race or the day completed or the race committee signals that no more race will be made, whichever is later.  
The race committee chairman may extend the check-in time limit. It will be notified via "LINE".
- 19.4 When boats returned because of the completion of the races in the morning time or the abandonment or the postponement of the race, the check-in shall be made.  
When boats will leave the harbor for the races in the afternoon time, or for the resumption of the race which was abandoned or postponed, the check-out shall be made before departure from shore in accordance with SI 19.2.
- 19.5 A boat who would retire from a race and a boat who would not compete in the next race shall keep away from the racing area and shall notify his/ her intension to a nearest race committee boat or the race office and the declaration of the retire and the reason shall be made at the race office.
- 19.6 Every Optimist Dinghy Beginners' Class boat is requested to put "the recognizable ribbon" distributed by the race committee at the peak of the sprit.
- 19.7 The race committee may rescue a competitor if they cannot get any response to their inquiry for the intension of him/her whether he/she will continue the race or retire from the race, when they judge he/she is in danger and unable to decide anything himself/herself because of fatigue after they recommend the retiring from the race. This will not be ground for a protest by a boat.  
This changes rule 61.2.

## 20. Crew changes and Replacement of equipment

- 20.1 [DP] Substitution of competitors is not permitted.
- 20.2 [DP] A boat who would substitute any damaged or lost equipment shall obtain the permission from the technical committee as soon as possible.
- 20.3 There will be the case to carry the measurement or inspection at any time during the regatta in order to confirm whether a boat or any equipment agrees with the class rules, the Notice of Race or SI.  
The technical committee may instruct a boat to go to the designated area for the inspection.

## 21. [NP] Official boats

Official boats of the race committee will be identified as follows.

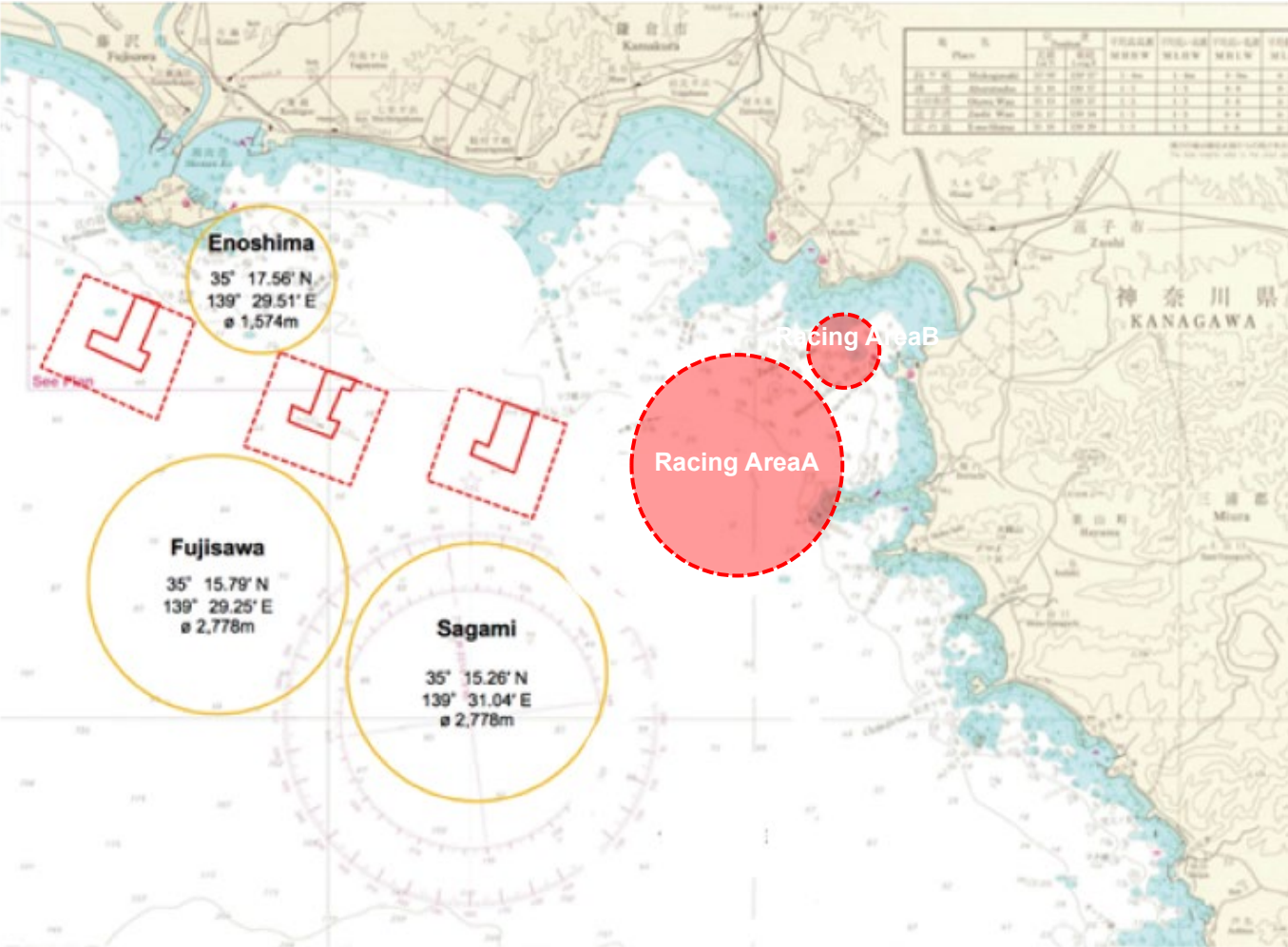
Name of the official boat	Indication
The race committee signal boat	JJYU flag
The race committee boat	RC
The protest committee boat	JURY
The rescue boat	RESCUE
The transport boat	RC

## 22. [DP] Support boats

- 22.1 Any club wishes to bring in the support boat to the regatta shall apply with the designated application form for the entry according to Notice of Race, writing the necessary matters on the form.
- 22.2 The support boat shall hoist the green flag which will be lent from the regatta secretariat at the time of the entry.
- 22.3 The number of the crew on board a support boat is required to be less than a half of her capacity. Also, the number shall be the one to avoid close contact with each other.
- 22.4 A support boat shall keep away from the racing area from the time of the warning signal for the first race of the first class to start until all boats have finished.
- 22.5 A support boat may supply any foods and drink for the competitors outside the racing area after the boat finishes and before the next warning signal if the race will be made continuously. However, unless the race committee requests to do so, a support boat shall not supply/receive any other materials to/from the competitors and shall not give any assistance such as towing a boat.
- 22.6 A support boat may be requested to help rescue operation and, in such case, the race committee signal boat will display pink color flag with the consecutive short sounds. In this case, SI 22.4 and 22.5 will not apply.
- 22.7 Support boats leaving from Hayama Port must report their departure to the race office.
23. Trash disposal  
Boats must not throw trash in to the sea. However, trash may be placed aboard support boats or official boats.
24. Risk Statement  
Rule 3 states, "The boat is solely responsible for deciding whether to participate in the race or continue the racing. "Participation in the competition means each sailor agrees and acknowledges that sailing has inherent risks and is a potentially dangerous behavior. These risks include strong winds, rough seas and sudden modifies in weather. The risks inherent in sailing sports are the risk of serious injury that will last a lifetime or death caused by drowning, trauma, hypothermia and other causes.



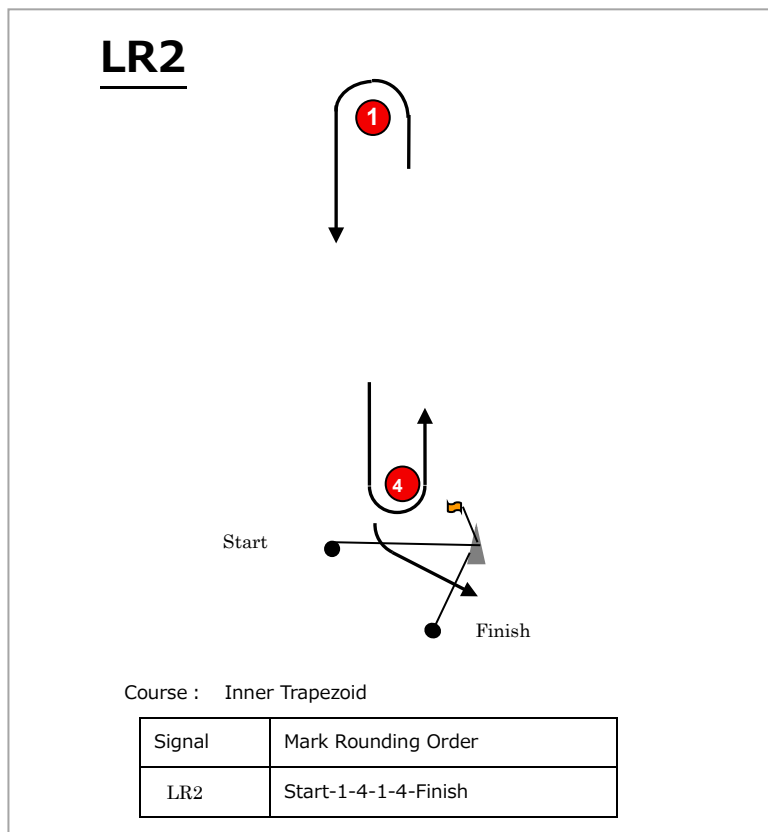
Diagram—1    Racing Area



海上保安庁発行の水路図誌を使用しています。 This is a reproduction of a nautical chart published by Japan Coast Guard.

## Diagram—2 Courses

### International 420 Class, ILCA4



### Optimist Dinghy Advanced Class (Racing Area A)

### Optimist Dinghy Beginners' Class (Racing Area B)

